

 Fabbian

FABBIAN DECORATIVE

F21 Cloudy





Company overview.

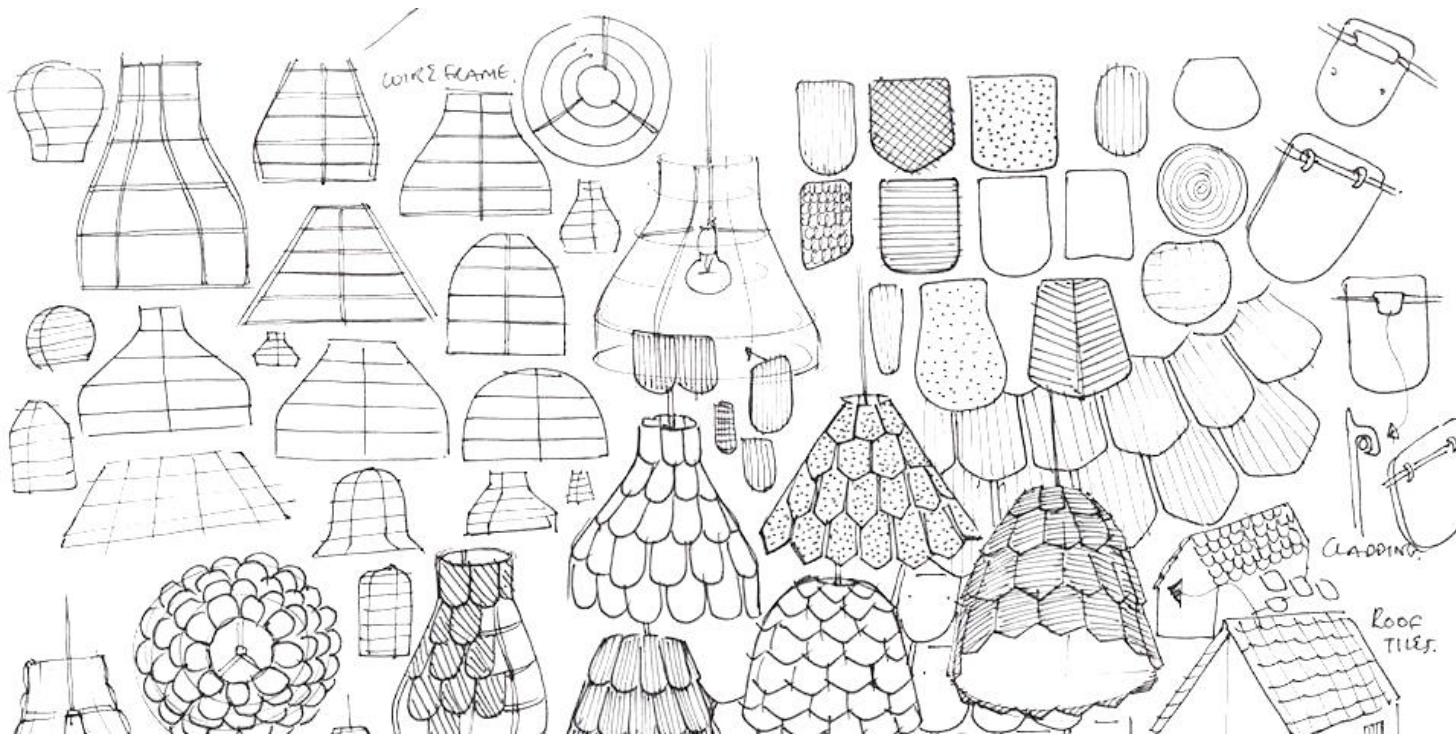
Established in 1961 in the Venetian countryside, Fabbian is one of the premier Italian lighting manufacturers operating in the modern design market, designing and manufacturing lighting fixtures for residential and commercial markets.

This history, combined with traditional Italian craftsmanship and the finest quality, keeps Fabbian a prominent brand that is internationally recognized in the architectural and design communities worldwide.

Company overview.

The endless research on new materials, trends, and aesthetics has always been combined with market demands and new business opportunities.

From the very beginning to the design application, the product life cycle is strictly controlled to make sure that each light fixture meets the highest quality expectations and safety requirements.



These components give Fabbian products a vast and diversified array of inspirations and styles, which is also ensured by yearly prestigious collaborations with well-renowned and emerging designers.

COMPANY PROFILE



North America.

With over 20 years in North America, Fabbian USA offices are located in the world's capital of design, **New York City**, just blocks from Time Square.

Company structure.

Proudly headquartered in Castelmino di Resana, in the **Venetian Countryside**, the company has an international outreach.

From **Venice**, it manages directly the European region, while it distributes the products through agents or importers in the other macro-geographical areas (Greater China, Russia, South and East Asia, South America, GCC countries, Northern Africa).



Designers.

Fabbian has collaborated with some of the most prestigious designers throughout the world to create unique elements for your home and business.



A.SAGGIA &
V.SOMMELLA



AFRA E TOSIA
SCARPA



ALBERTO APOSTOLI



ALBERTO TORSELLO



FORMFJORD



FRANCESCO
LUCCHESI



GIAMPIERO DERAÏ



GIAN PAOLO CANOVA



MATALI CRASSET



MATHIEU
LEHANNUR



NICOLA DESIGN



NICOLA GARDIN-
ROGER ZANON



ALESSANDRA
BALDERESCHI



ALI SIAHVOSHI



BARTEK MEJOR



BENJAMIN HUBERT



GIGI ROSSI



GIO MINELLI



GUILLAUME
DELVIGNE



J.DELLA FONTANA
DZU



PAMIO DESIGN



PAOLO DE LUCCHI



PELLEGRINI+MENGATO
DESIGN



PIOSTITO TOSO



BRIDGEWELL
CONSULTING LTD



CONSTANCE GUISSET



D.SUSATO &
G.CICCARESE



DESIGNZAGATO



KARIM RASHID



LAGRANJA DESIGN



LORENZO TRUANI



LUCA SCACCHETTI



PROSPERO RASULO



RENATO MONTAGNER



STUDIO FUTURA



TIZIANO MAFFIONE



DOMPIER&PISONI



FE DESIGN



FEDERICA BUSANI



FLYNN TALBOT



LUCIE KOLDOVA



MARC SADLER



MARY PAVIN



MASSIMO&MARZIA
SACCONI



VIM & VIGOR



VITTORIO MASSIMO

Trade Shows & Events.

Fabbian takes part in the world's most relevant trade show dedicated to light, EUROLUCE, in Milan, every two years, with a massive booth to showcase new collections and best seller products. Other important dates in the Fabbian's calendar are Stockholm Furniture & Light Fair, WantedDesign Manhattan, and Sleep London.



FABBIAN BREADTH OF LINE

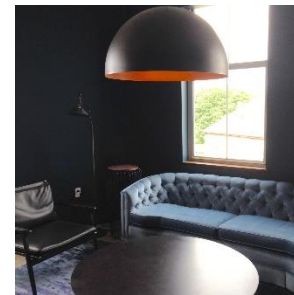
FABBIAN CUSTOM



Customizable &
Unique Art & Large
scale products

Client Specific
Custom Fixture
Development

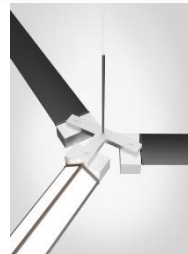
FABBIAN DECORATIVE



Both Glass and Non-
Glass Feature
Elements.

Varying Styles,
uniquely Italian for
the specified project

FABBIAN TECH



Italian Architectural
Downlights, Linear, &
Systems

F21 CLOUDY

“Cloudy is a paradox!” – explains young designer, Mathieu Lehanneur – “This lamp was created using extremely complex steel molds, which have given it an almost magical lightness, a glass cloud floating in the air”. The Cloudy “cloud”, when switched on, reveals all its luminosity and evokes the feeling of sunlight after the rain.

Originally conceived as an art piece, the initial concept to turn Cloudy into a production element required the creation of the complex mold design unlike any other used in glass blowing.



Designer:
Mathieu Lehanneur

F21 CLOUDY

Each Cloudy element is skillfully crafted by local artisans in the countryside of Venice, using generations old techniques coupled with new technologies (including Cloudy's own complex mold). Each hand crafted glass is unique and features the transition of milky white to clear glass.

The collection includes pendant and ceiling mount fixtures, offered in two diameters and choice of integral LED or incandescent light sources.

Cloudy is suitable for residential and commercial projects. The unique design will liven up any space and bring interest and depth to spaces.

Winner of the prestigious IF Design Award 2014.



F21 CLOUDY- Making The Glass



Cloudy is an example of Mold-blowing

A glob of molten glass is placed on the end of the blowpipe, and is then inflated into a custom metal mold. In that way, the shape and the texture of the bubble of glass is determined by the design on the interior of the mold

F21 Cloudy counts up to 25 production steps taking place between a typical Italian vetreria (tiny manufacturing bottega) and the Fabbian's factory located next to Venice.



F21 CLOUDY- Making The Glass

To create Cloudy's shape as a production model, a very complex mold was required.



The gaffer blows through the tube forcing the glass against the inner surfaces of the mold, and the glass assumes the shape of the mold including any decoration.

F21 CLOUDY- Making The Glass

After the diffuser is complete, it has to pass quality control inspections and specific tests: hole size, color test, thickness, volume, and product size.

To see the process,
watch the [Cloudy Video](#)!



F27 Cloudy - Pendants

Cloudy pendants are offered in two sizes and can be ordered with a medium based socket or with an integral LED. Die-cast aluminum hardware and canopy
Integral LED sources are Triac dimmable.

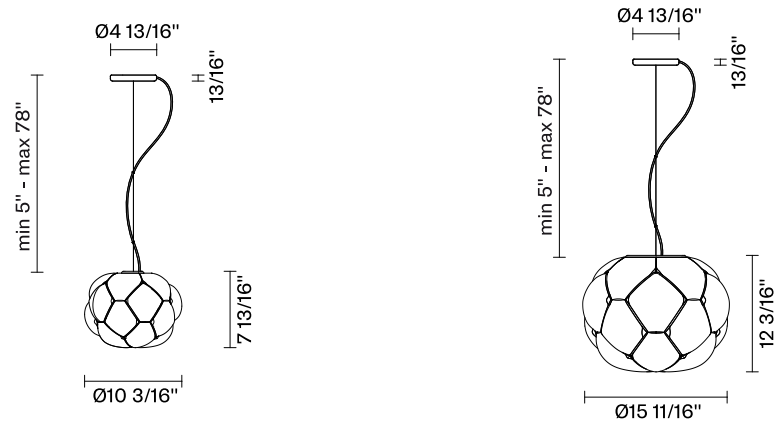
LED Models:

F21 A01A 71 – 10.2" Diameter; 8.5W, 3000K, 800 Lumens, CRI >80 LED

F21 A02A 71 – 15.7" Diameter; 17W, 3000K, 1850 Lumens, CRI>80 LED

E26 Models:

F21 A05A 71 – 15.7" Diameter; 1 X 150W Max E26 Incandescent or retrofit lamp



F27 Cloudy - Ceiling

Cloudy Ceiling lights are offered in two sizes and can be ordered with a medium based socket or with an integral LED. Die-cast aluminum hardware and canopy
Integral LED sources are Triac dimmable.

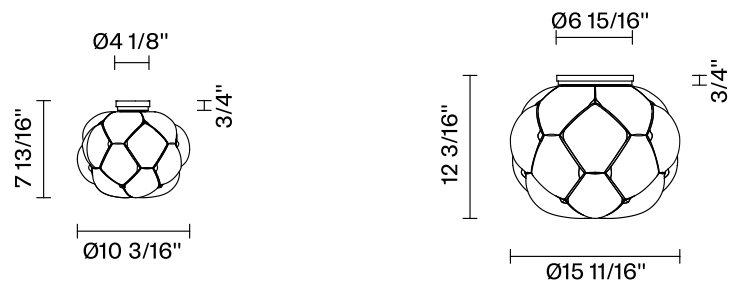
LED Models:

F21 E01A 71– 10.2" Diameter; 8.5W, 3000K, 800 Lumens, CRI >80 LED

F21 E02A 71– 15.7" Diameter; 17W, 3000K, 1850 Lumens, CRI>80 LED

E26 Models:

F21 E05A 71 – 15.7" Diameter; 1 X 150W Max E26 Incandescent or retrofit lamp





Café ArtScience

Cambridge, MA

*Interiors & Fixture
Design by Mathieu
Lehanneur
Brown - Fenollosa*

*Lighting Design by
Ripman Lighting
Consultants*

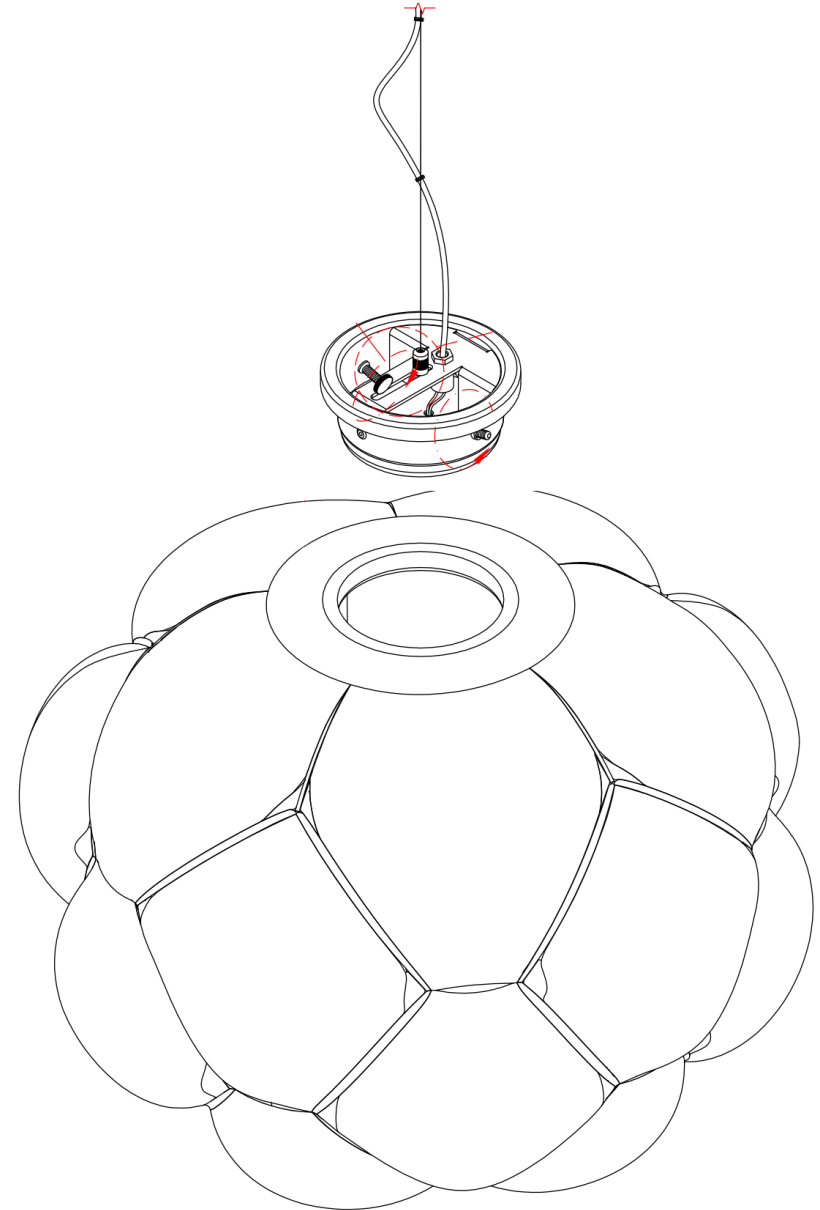
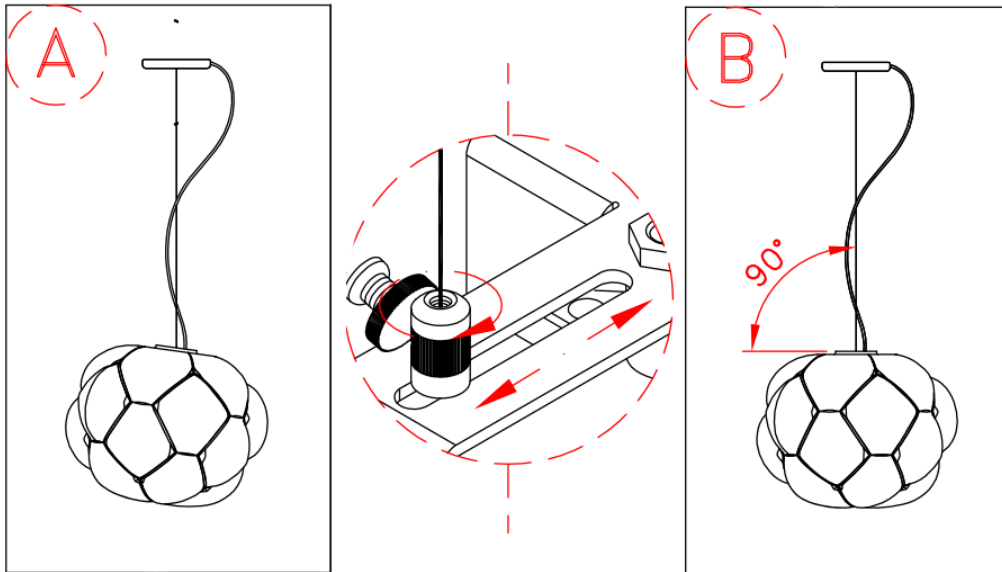
Photo by Phase One

F27 Cloudy -Installation

Cloudy Pendant Mounting Installation:

Cloudy Pendants include leveling mechanisms to keep the glass level when installing.

- Cables can be bound together with the included clear bands
- Eliminates long balancing rod atop fixtures for a cleaner aesthetic, especially in larger scale fixtures.



F27 Cloudy -Installation

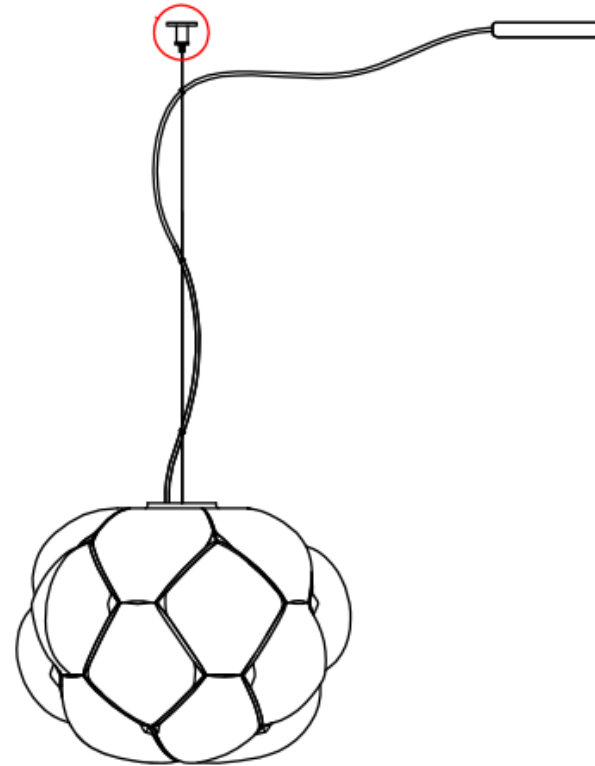
Pendant Alternate Mounting:

- Offset mounting hardware is included with pendants that have separate support cable allowing j-box to be located away from fixture.
- Hardware can be used with or without the cover disk.

Benefits:

- Simplifies installation for the following conditions:
 - Sloped ceiling installations
 - Through ceiling installations (ie. Slatted ceilings)
 - Single J-box can now feed multiple pendants
 - If power is in a non-visible area, no canopy niceties to manage

KIT DI DECENTRAMENTO DECENTRALIZATION KIT



Offset Mounting Hardware
Shown with and without disk





**Café
ArtScience**

–
Cambridge, MA

*Interiors &
Fixture Design
by Mathieu
Lehanneur
Brown -
Fenollosa*

*Lighting Design
by Ripman
Lighting
Consultants*

Photo by Phase One







NoGlu

–
Paris

*Mathieu
Lehanneur*

Photo by Michel-Giesbrecht

NoGlu

–
Paris

Mathieu
Lehanneur



Photo by
Michel-Giesbrecht





For more information contact:

Fabbian USA

www.fabbian.us

307 W38th St. Ste 1103

New York, NY 10018 USA

sales@fabbian.com

• **Fabbian**